

JVC®

The Perfect Experience / —

MEGAPIXEL NETWORK CAMERA

VN-X35U

IP Camera with 1.3 Megapixel Progressive Scan CCD and MPEG-4/Motion JPEG Dual Stream

Mega-details Bandwidth Flexibility with
Versatile Monitoring Functions



V.NETWORKS

MEGAPIXEL



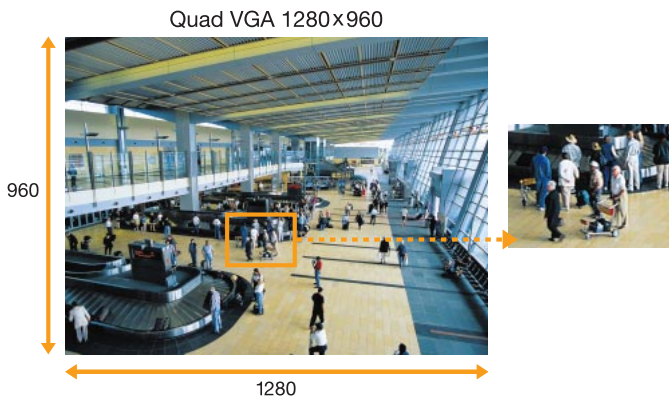
- ▶ **1.3 Megapixel High-Quality JPEG Stream**
Up to Quad VGA (1280x960) resolution images available for precise monitoring
- ▶ **Progressive Scan CCD**
For sharper, clearer images without any jaggy even for moving images
- ▶ **MPEG-4/Motion JPEG Dual Stream**
Simultaneous distribution of MPEG-4 and Motion JPEG images
- ▶ **Digital PTZ Function**
Digitally pan/tilt and zoom with high image quality maintained
- ▶ **Freely Selectable Partial Scan**
Up to 20 areas can be selected as "Preset Positions" for sequential scanning like "auto patrol"
- ▶ **Privacy Mask for Protecting Intrusive Monitoring**
Free shape and unlimited number of masked areas can protect subjects from invasion of privacy
- ▶ **Bi-Directional Audio Support**
Two-way audio communication is possible when a microphone and speaker are attached
- ▶ **Focus Assist for Accurate Focusing**
Focus Assist mode to accurately adjust the focus for precise imaging
- ▶ **Day/Night Monitoring Functions**
Easy Day/Night and Easy Wide-D backlight compensation for secure round-the-clock surveillance
- ▶ **Compact Design for Easy Installation**
Relatively small size for a Megapixel camera contributing to installation flexibility
- ▶ **Open Architecture API for Easy Customization**
Various settings and customization are possible via network

Product photo shown with optional lens



1.3 Megapixel CCD for High Resolution Images

The VN-X35U incorporates a 1.3 Megapixel progressive scan CCD to capture high-quality, high-precision images. It can distribute up to Quad VGA (1280x960) resolution Motion JPEG images which are 4 times larger than conventional VGA. This increased visual information means a face or a license plate can be identified even when enlarged by digital zoom.



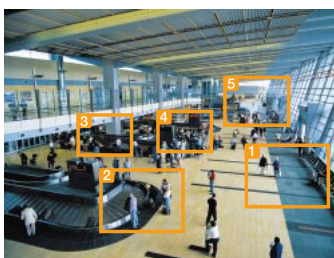
Digital PTZ Function

Quad VGA images allow you to use the VN-X35U like the PTZ camera. Using the digital zoom, you can magnify any area of the image and magnified area can be moved freely maintaining the same zoom ratio. The speed of Pan/Tilt and Zoom are adjustable from several levels.



Built-in viewer

Freely Selectable Partial Scan



Select up to 20 areas as "Preset positions" to be clipped from within the original angle and distributed sequentially like the "Auto Patrol" function of PTZ cameras.

Original angle (Home)



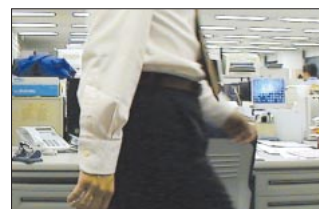
Simultaneous MPEG-4/Motion JPEG Dual Stream

The VN-X35U can stream both MPEG-4 and Motion JPEG images simultaneously at up to 15fps. Motion JPEG image (QuadVGA/VGA/QVGA) are useful when you need to record images as evidence data because of the high quality still pictures it can provide. And MPEG-4 (VGA/QVGA) distribution is ideal where monitoring with smooth, high frame rate images is required within a limited bandwidth. With VN-X35U, you can select compression format and distribution size depending on your network's bandwidth or requirements.

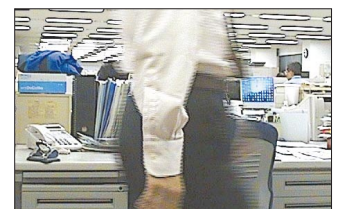
Note: Depending on the type of distribution, there are some restrictions on Privacy Mask function.

Progressive Scan Jaggy-free Images

The VN-X35U's progressive scan images are optimal for monitoring on LCD or TFT monitors. You can obtain clear images without distortion even for moving objects.



Progressive Scan



Interlaced Scan

Increased Visual Information and Intelligent Monitoring Functions for Incredible Levels of Usability



Easy Day/Night Function

Easy Day/Night function assures round-the-clock optimum imaging performance. The VN-X35U automatically uses color mode when the object is bright, and B&W mode when it is very dark. In B&W mode, AGC remains active to ensure high performance even under low-light conditions.

Easy Wide-D Function for Backlight Compensation

The Easy Wide-D function by gamma adjustment is equivalent to the conventional Wide Dynamic Range function, allowing pictures to be adjusted to identify details of the subject even in backlit conditions.



Normal picture

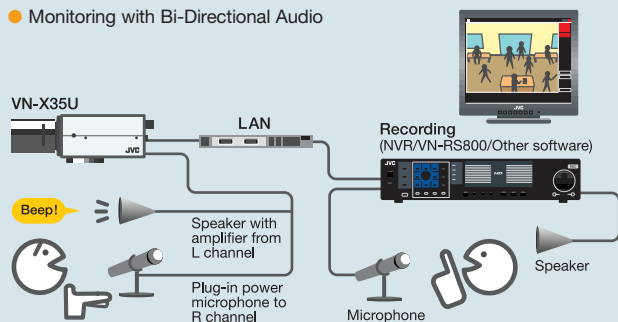


Adjusted with Easy Wide-D

Bi-Directional Audio Communication

The VN-X35U incorporates a Mic In/Line Out connection for bi-directional audio communication. So in addition to viewing the camera spot, you can listen in on the area from a monitoring room. With an external speaker attached, you can speak to or emit an alarm sound for visitors. A more advanced monitoring system with the capability of conversation and warning can also be configured.

Monitoring with Bi-Directional Audio



Compatible JVC recorders:

- VR-N1600U/E Series Network Video Recorder
- VN-RS800U (Free software for surveillance with up to 32 cameras)

Privacy Mask for Protecting Intrusive Monitoring

You can protect subjects from invasion of privacy by masking certain areas of the screen. Mask areas can be specified using bitmap-format overlay data. Positions and shapes of areas can be freely set and number of areas are unlimited.



Without Privacy mask



With Privacy mask

Focus Assist for Accurate Focus Adjustment

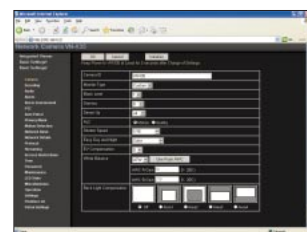
Accurate focusing is essential for reliable monitoring. Thanks to the Focus Assist function, you can easily adjust the focus precisely. The iris fully opens when the Focus Assist mode is engaged, reducing the depth of field and therefore making it easier to find the exact focal point.

Open Architecture API for Easy Customization

The VN-X35U employs the open architecture API (Application Programming Interface) which allows higher flexibility with simple command system and HTTP-based protocol. Various settings and customization are possible via network.

Other Features

- Built-in setup tool and viewer with easy browser-based operation
- PoE (Power over Ethernet) for easy, cost-saving installation
- Lowest operating temperature of -10°C
- Motion detection
- NTSC/PAL monitor output (only for setup)
- Multicasting capability
- FTP Client function



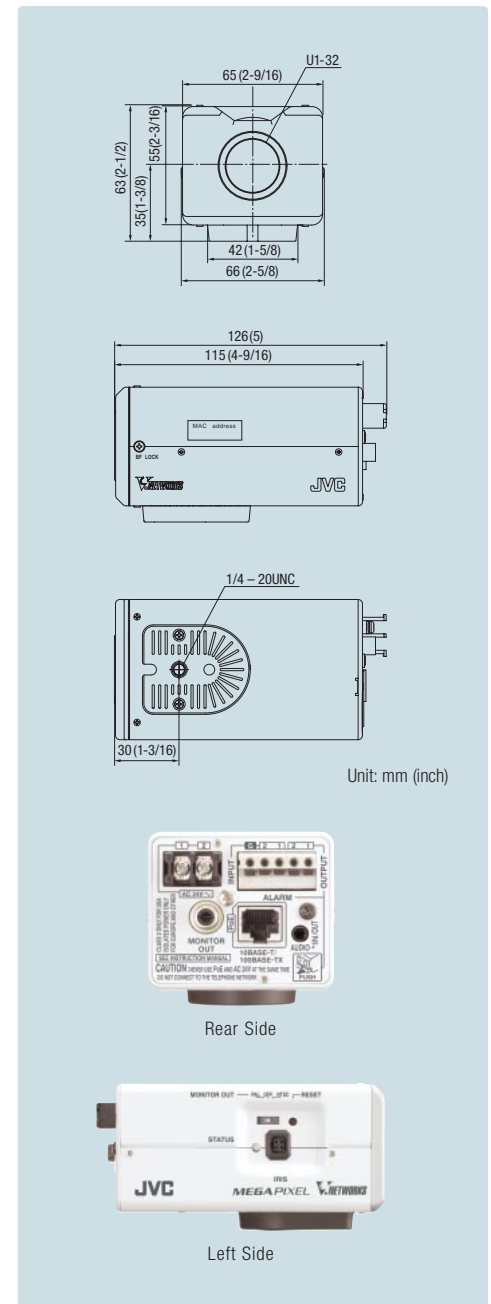
Setup tool

Images are explanatory purposes and are not actual images attained using this product.

► Specifications

Image device	"EXview HAD CCD" 1/3" Progressive scan	
No. of effective pixels	1,250,000 (1,296H x 966V)	
Lens (not included)	DC-iris, CS Tested lens: TAMRON M13VG246/M13VG308/M13VG550 FUJINON YV2.8x2.8SA-SA2/YV4.3x2.8SA-SA2	
Minimum illumination	Color	0.7 lx (F1.0, 50%, AGC SUPER) 0.3 lx (F1.0, 25%, AGC SUPER)
	B&W	0.5 lx (F1.0, 50%, AGC SUPER) 0.2 lx (F1.0, 25%, AGC SUPER)
Day/Night	Easy Day/Night	
Picture compression	Motion JPEG MPEG-4: Part 2 (ISO/IEC 14496-2), Profile: SP	
Picture resolutions	1,280 x 960 (Motion JPEG only), 640 x 480, 320 x 240	
Frame rate and streaming	Up to 15fps per each stream of 1,280 x 960 Motion JPEG and 640 x 480 MPEG-4 simultaneously (Dual stream)	
Compression levels	JPEG: Variable (VFS) / Average (AFS) VFS 7 levels / AFS 40KB – 200KB (Quad VGA), 10KB – 100KB (VGA) MPEG-4: Constant (CBR) / Variable (VBR), Bit rate adjustable 64kbps – 8000kbps	
Image settings	Configurable AGC, Sens-up, Day/Night, Shutter speed, BLC, ALC, White balance (ATW/AWC), Gamma curve, Black level, Enhance range, Color level, Exposure value, Monitor type, Free shape privacy mask, Time/date/camera ID overlay	
Digital PTZ	20 preset positions, Auto patrol, Auto return, 8x digital zoom	
Shutter speed	1.5 sec (Sens-up) to 1/10000 sec	
Audio	Two-way (full/half duplex) or one-way External microphone input (plug-in power condenser mic) and output (line level) Audio compression: μ -law 64kbps, AD/DA 16bits Fs=8kHz	
Access protection	3 levels password, IP address filtering	
Max. clients	20 simultaneous users, Unlimited users by multicast	
Alarm/Event management	Trigger: Built-in motion detection, external alarm input x 2 Event: Pre/post recording, FTP sending, Notification over TCP/UDP, e-mail, external output x 2, sound output, preset position Pre/Post alarm buffer of 8MB	
Connectors	RJ-45 for Ethernet 100Base-TX/10Base-T/FULL/HALF/Auto negotiation Terminal blocks for 2 alarm inputs, 2 outputs RCA for monitor out (for setup only) Alternative power connection Mini jack dia. 3.5 mm for mic in and line out	
Power	24 VAC (50Hz/60Hz), 0.5A or 48 VDC (PoE, IEEE802.3af class 0), 135mA (6.5W)	
Operating temperature	-10°C to 50°C/14°F to 122°F (0°C to 40°C /32°F to 104°F recommended)	
Installation and maintenance	Web based setting tool, Camera search tool, Firmware update over HTTP	
Minimum web browsing requirements	OS: Windows Vista Business (SP1), Windows XP Pro (SP2) / Home (SP2), CPU: Pentium 4 (2GHz), RAM: 1GB, HDD space: 512MB Browser: Internet Explorer 7.0 (Windows Vista), Internet Explorer 6.0 (Windows XP) Display and video card: 1600 x 1200 True color (24bit or 32 bit) 256MB VRAM	
System integration support	Open API for application integration, ActiveX Viewer, QoS, Embedded Linux operating system	
Supported protocols	TCP/IP, UDP, HTTP, FTP, ICMP, ARP, RTP, DHCP, SNMP, SMTP, IGMP, IPv6	
Video management software/hardware (not included)	VR-N900U/1600U/1600E: JVC Network Video Recorder for viewing, recording and archiving up to 9/16 cameras/encoders VN-RS800U: JVC free video management software for viewing, recording and archiving up to 32 cameras/encoders (JPEG stream only)	
Dimensions (WxHxD)	65mm x 63mm x 126mm (2-9/16" x 2-1/2" x 5")	
Weight	510g (1.13lbs)	

► Dimensions



"EXview HAD CCD" is a registered trademark of Sony Corporation.

All brand or product names may be trademarks and/or registered trademarks of their respective owners. Copyright © 2008, Victor Company of Japan, Limited. All Rights Reserved.

JVC®

DISTRIBUTED BY



Design and specifications subject to change without notice.



■ Hachioji Business Centre of Victor Company of Japan, Ltd. has received ISO14001 Certification for environmental management and ISO9001 Certification for quality assurance management.

Printed in Japan

VEC-0326 VN-X35U

"JVC" is the trademark or registered trademark of Victor Company of Japan, Limited.