

JVC

READ ME FIRST

IP CAMERA VN-V25U/VN-V26U MEGAPIXEL IP CAMERA VN-X35U

LST0744-001B

Thank you for purchasing this JVC product. Before operating this unit, please read the instructions carefully to ensure the best possible performance.

■ This manual contains the basic instructions for using this unit.

Please refer to [INSTRUCTIONS](pdf) and [INSTRUCTIONS (Setting)](pdf) in the CD-ROM supplied with this product for description on the detailed usage of this unit.

For the latest information, please refer to the "README" file in the CD-ROM supplied with this product.

- The supplied CD-ROM includes [INSTRUCTIONS](pdf), [INSTRUCTIONS (Setting)](pdf), [API Guide](pdf), [VSIP Guide](pdf), [Search tool] and [White Spot Correction Tool].

■ How to read this READ ME FIRST.

- All rights reserved by JVC. Unauthorized duplication or reprinting of this manual, in whole or in part, is strictly prohibited.
- Windows is a registered trademark of Microsoft Corporation in the U.S
- All other product names used in this manual are trademarks or registered trademarks of their respective companies. Marks such as ™, ® and © have been omitted in this manual.
- Illustrated designs, specifications and other contents of this manual are subject to changes for improvement without prior notice.

Check the Accessories/Attachments.

- Read Me First
- CD-ROM
- Warranty Card (For USA)
- Service Information Card(For USA)

IMPORTANT SAFEGUARDS

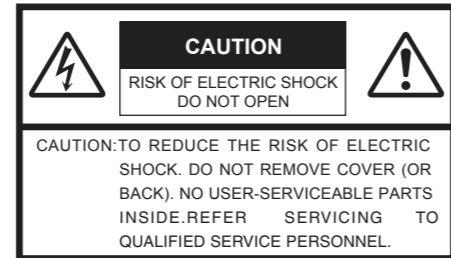
1. Read all of these instructions.
2. Save these instructions for later use.
3. All warnings on the product and in the operating instructions should be adhered to.
4. Unplug this appliance system from the wall outlet before cleaning. Do not use liquid cleaners or aerosol cleaners. Use a damp cloth for cleaning.
5. Do not use attachments not recommended by the appliance manufacturer as they may cause hazards.
6. Do not use this appliance near water - for example, near a bathtub, washbowl, kitchen sink, or laundry tub, in a wet basement, or near a swimming pool, etc.
7. Do not place this appliance on an unstable cart, stand, or table. The appliance may fall, causing serious injury to a child or adult, and serious damage to the appliance. Use only with a cart or stand recommended by the manufacturer, or sold with the appliance. Wall or shelf mounting should follow the manufacturer's instructions, and should use a mounting kit approved by the manufacturer. An appliance and cart combination should be moved with care. Quick stops, excessive force, and uneven surfaces may cause the appliance and cart combination to overturn.
8. Slots and openings in the cabinet and the back or bottom are provided for ventilation, and to insure reliable operation of the appliance and to protect it from overheating, these openings must not be blocked or covered. The openings should never be blocked by placing the appliance on a bed, sofa, rug, or other similar surface. This appliance should never be placed near or over a radiator or heat register. This appliance should not be placed in a built-in installation such as a bookcase unless proper ventilation is provided.
9. This appliance should be operated only from the type of power source indicated on the marking label. If you are not sure of the type of power supplied to your home, consult your dealer or local power company. For appliance designed to operate from battery power, refer to the operating instructions.
10. For added protection for this product during a lightning storm, or when it is left unattended and unused for long periods of time, unplug it from the wall outlet and disconnect the antenna or cable system. This will prevent damage to the product due to lightning and power-line surges.
11. Do not allow anything to rest on the power cord. Do not locate this appliance where the cord will be abused by persons walking on it.
12. Follow all warnings and instructions marked on the appliance.
13. Do not overload wall outlets and extension cords as this can result in fire or electric shock.
14. Never push objects of any kind into this appliance through cabinet slots as they may touch dangerous voltage points or short out parts that could result in a fire or electric shock. Never spill liquid of any kind on the appliance.
15. Do not attempt to service this appliance yourself as opening or removing covers may expose you to dangerous voltage or other hazards. Refer all servicing to qualified service personnel.
16. Unplug this appliance from the wall outlet and refer servicing to qualified service personnel under the following conditions:
 - a. When the power cord or plug is damaged or frayed.
 - b. If liquid has been spilled into the appliance.
 - c. If the appliance has been exposed to rain or water.
 - d. If the appliance does not operate normally by following the operating instructions. Adjust only those controls that are covered by the operating instructions as improper adjustment of other controls may result in damage and will often require extensive work by a qualified technician to restore the appliance to normal operation.
 - e. If the appliance has been dropped or the cabinet has been damaged.
 - f. When the appliance exhibits a distinct change in performance - this indicates a need for service.
17. When replacement parts are required, be sure the service technician has used replacement parts specified by the manufacturer that have the same characteristics as the original part. Unauthorized substitutions may result in fire, electric shock, or other hazards.
18. Upon completion of any service or repairs to this appliance, ask the service technician to perform routine safety checks to determine that the appliance is in safe operating condition.

PORTABLE CART WARNING
(symbol provided by RETAC)



S3125A

FOR USA AND CANADA



The lightning flash with arrowhead symbol, within an equilateral triangle is intended to alert the user to the presence of uninsulated "dangerous voltage" within the product's enclosure that may be of sufficient magnitude to constitute a risk of electric shock to persons.

The exclamation point within an equilateral triangle is intended to alert the user to the presence of important operating and maintenance (servicing) instructions in the literature accompanying the appliance.

Information for USA

This device complies with part 15 of the FCC Rules. Changes or modifications not approved by JVC could void the user's authority to operate the equipment.

This equipment has been tested and found to comply with the limits for a Class A digital device, pursuant to Part 15 of the FCC Rules. These limits are designed to provide reasonable protection against harmful interference when the equipment is operated in a commercial environment. This equipment generates, uses, and can radiate radio frequency energy and, if not installed and used in accordance with the instruction manual, may cause harmful interference to radio communications. Operation of this equipment in a residential area is likely to cause harmful interference in which case the user will be required to correct the interference at his own expense.

This device complies with Part 15 of the FCC Rules.

Operation is subject to the following two conditions: (1) This device may not cause harmful interference, and (2) this device must accept any interference received, including interference that may cause undesired operation.

Due to design modifications, data given in this instruction book are subject to possible change without prior notice.

WARNING:
TO REDUCE THE RISK OF FIRE OR ELECTRIC SHOCK, DO NOT EXPOSE THIS APPLIANCE TO RAIN OR MOISTURE.

AVERTISSEMENT:
POUR EVITER LES RISQUES D'INCENDIE OU D'ELECTROCUTION, NE PAS EXPOSER L'APPAREIL A L'HUMIDITE OU A LA PLUIE.

INFORMATION (FOR CANADA) RENSEIGNEMENT (POUR CANADA)

This Class A digital apparatus complies with Canadian ICES-003.

Cet appareil numérique de la Class A est conforme à la norme NMB-003 du Canada.

WARNING (FOR EUROPE):

This is a Class A product. In a domestic environment this product may cause radio interference in which case the user may be required to take adequate measures.

Dear Customer

This apparatus is in conformance with the valid European directives and standards regarding electromagnetic compatibility and electrical safety.

European representative of Victor Company of Japan, Limited is:

JVC Technical Services Europe GmbH
Postfach 10 05 04
61145 Friedberg
Germany

Sehr geehrter Kunde, sehr geehrte Kundin, dieses Gerät stimmt mit den gültigen europäischen Richtlinien und Normen bezüglich elektromagnetischer Verträglichkeit und elektrischer Sicherheit überein.

Die europäische Vertretung für die Victor Company of Japan, Limited ist:

JVC Technical Services Europe GmbH
Postfach 10 05 04
61145 Friedberg
Deutschland

FOR USA-California Only

This product contains a CR Coin Cell Lithium Battery which contains Perchlorate Material - special handling may apply.

See

www.dtsc.ca.gov/hazardouswaste/perchlorate

- This installation should be made by a qualified service person and should conform to all local codes.

- This installation shall be in accordance with the National Electrical Code, ANSI/NFPA 70.

The unit is to be powered by an AC 24 V power supply or using the PoE.

The AC 24 V power supply should conform to the following: Class 2 only (For USA), Isolated power supply only (For Europe and other).

- Any Mention in this manual of Alarm inputs/outputs have not been evaluated by UL to be used for Burglar Alarm Functionality.

■ The latest version

Please visit [V.NETWORKS](http://www.vic-networks.com) web site to check the latest firmware at

<http://www.jvc-victor.co.jp/english/products-e.html>

(The latest firmware can be found on [V.NETWORKS](http://www.vic-networks.com) → download page)

Operating Environment

Recommended Computer Specifications

OS : Windows XP (Professional or Home Edition)(SP2)
: Windows Vista Business (SP1)

CPU : VN-V25U/VN-V26U : Pentium4 1.5 GHz or higher
: VN-X35U : Pentium4 2 GHz or higher
Memory capacity : 1 GB or more
Free hard disk space : 512 MB or more

Display and video card : VN-V25U/VN-V26U : 1024x768 pixels or larger, True Color (24 or 32 bits)
: VRAM 8 MB or more (256 MB and above recommended)
: 1600 x 1200 pixels or larger, True Color (24 bits or 32 bits)
: VRAM 8 MB or more (256 MB and above recommended)

VN-X35U : Internet Explorer
: XP : Version 6.0
: Vista : Version 7.0

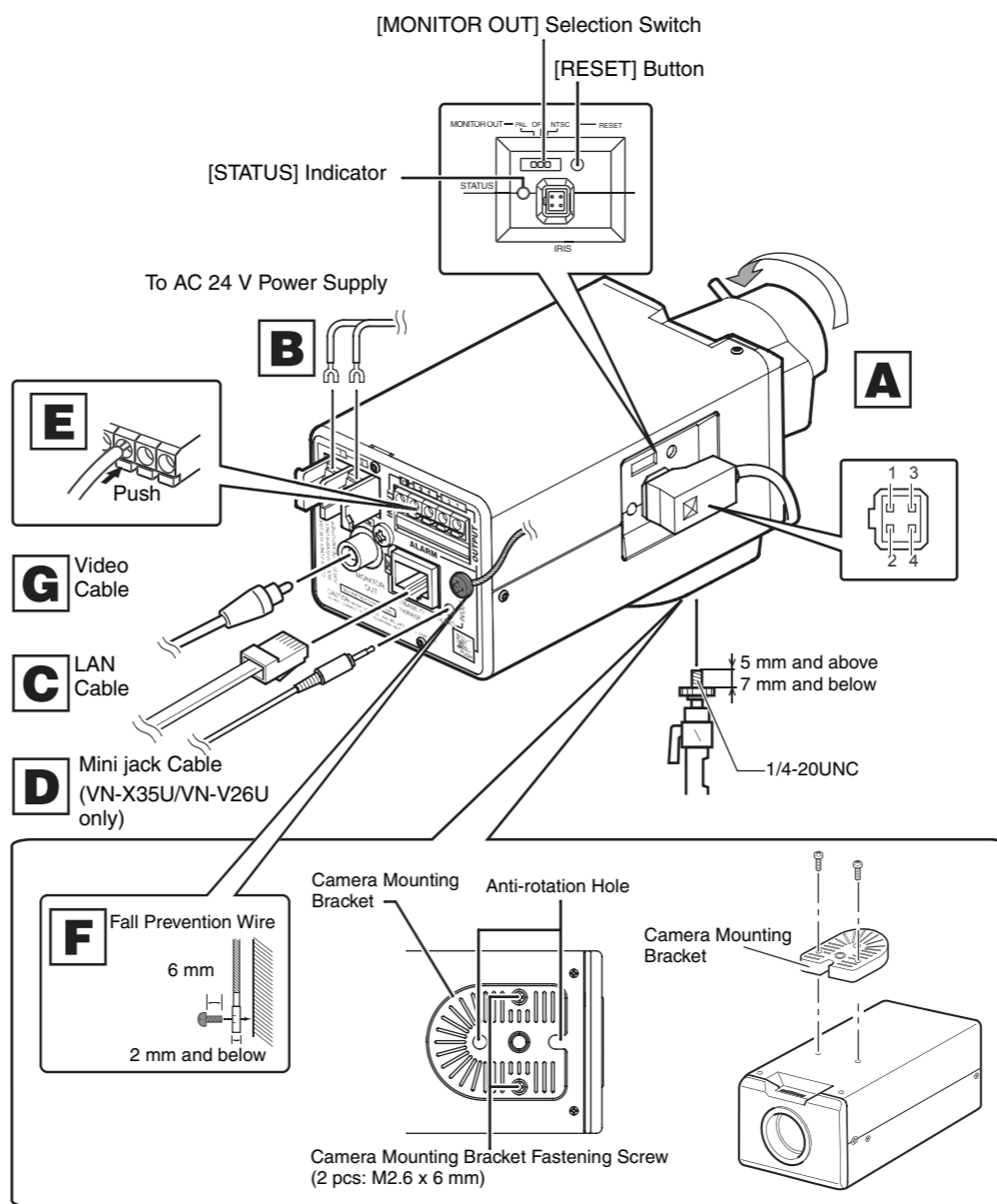
LAN Environment

- 10BASE-T/100BASE-TX network interconnected using devices such as an IEEE802.3-compliant switching hub.
- IEEE802.3af-compliant switching hub when PoE is in use.
- IGMPv2-compliant network when multicast is in use.

Memo :

- To use MPEG4 images on the built-in viewer, install the open source codec "ffdshow". You can download "ffdshow" from the Internet. JVC is not responsible for any damages resulting from your use of open source software.

*The model illustrated in the diagram is VN-X35U.



Connection of Camera

A Mounting the Lens

Memo :

- Make use of a megapixel lens. (VN-X35U only)

1 Turn the lens in the clockwise direction to mount it to the camera firmly

2 When using a DC iris lens, pay attention to the pin position before connecting the lens cable

Pin No.	DC Iris Lens (Without Built-in EE Amplifier)
1	Damping (-)
2	Damping (+)
3	Driving (+)
4	Driving (-)

B Power Connection

Electricity can be supplied to this product either by connecting to the AC 24 V power supply or using the PoE.

- When power is supplied to this product, the [STATUS] indicator at the side lights up. The indicator lights up in orange color during startup, and switches to green color after startup is complete.

■ POWER Cable : Connection distance when using 2-core VVF cable (reference values)

Conductor Diameter (AWG No.)	ø1.0 mm(18) and above		ø1.6 mm(14) and above		ø2.0 mm(12) and above	
	VN-V25U	VN-V26U	VN-V25U	VN-V26U	VN-V25U	VN-V26U
Maximum Extension	150 m	90 m	400 m	240 m	630 m	370 m
			140 m	360 m		570 m

Note:

- Make sure to select only one mode of electrical supply. Connecting the power cord and the LAN cable for the PoE at the same time may result in failure or malfunction of the camera.
- By default the IP addresses of all the cameras are set to 192.168.0.2. If the power of multiple cameras within the same LAN environment are turned on at the same time, the IP addresses of the cameras overlap, thus preventing proper access. As such, make sure to turn on the power of the cameras one by one and set the IP addresses such that there is no overlapping.

Warning

The rated power of this product is AC 24 V, 50 Hz/60 Hz. Make sure to use it with the correct voltage.

Use an AC 24 V supply that is isolated from the primary power supply.

Supplying a power beyond the rated value may result in failures, smoke or fire. When the camera breaks down, turn off the power and contact our service center immediately.

When a power beyond the rated value is supplied, the internal components may be damaged even if no abnormality is found on the appearance and operation of the camera.

Please contact our service center immediately for servicing (charged separately).

C LAN Cable Connection

Connect the camera to a hub or computer using a LAN cable.

- When connecting to a hub : Make use of a straight cable.
- When connecting to a computer : Make use of a cross cable.

Cable to use

- STP (Recommended shield cable)
- Length of 100 m or shorter
- Category 5 and above

Memo :

- To distribute images and audio to the network, set the [MONITOR OUT] selection switch at the side of this product to "OFF", then reboot the camera by turning off and on the power or pressing the [RESET] button for less than 2 seconds.
- PoE : class2 (VN-V25U)
class0 (VN-V26U/VN-X35U)

D Audio Signal Input/Output Terminal Connection (VN-V26U/VN-X35U only)

Connect the mini jack ø3.5 stereo cable.

L ch : Connect to speakers with built-in amplifier, etc.

R ch : Connect to plug-in power type capacitor microphone (VN-X35U)

(Supply voltage : DC 2.7 V(typ.), Input impedance : 2.2 kΩ(typ.))

* For VN-V26U, audio signals are input from the built-in microphone on the side of its body.

Note:

- Make sure that the external microphone is connected to the R ch and not other channels. When the microphone jack is plugged directly into the unit's [AUDIO IN/OUT] terminal, loud noises can be distributed to the network. (☞ [INSTRUCTIONS]) (VN-X35U only)

E Alarm Input/Output Terminal Connection

Connect the alarm input/output terminals with external devices, such as a sensor or buzzer.

Plug/Unplug the cable while pressing the button as shown in the diagram.

Cable to use

- Shielded cable (Recommended)
- Length of 50 m or shorter

Installation of Camera

F Mounting the Camera

Use the screw hole on the camera mounting bracket to mount this camera to a fixer or rotating platform.

- The camera mounting bracket is mounted on the bottom surface of the camera by default. To mount it to the top surface, do so by removing the two fastening screws from the camera mounting bracket. Make sure to fasten the screws firmly.

Warning

- To prevent the camera from falling off, ensure that it is connected to a firm place (ceiling slab or channel) using a fall prevention wire.
- Pay also careful attention to the length, strength, wiring, and material (insulating properties) of the fall prevention wire to be used. The length used should be as short as possible within the permissible range of the mounting length. The wire should be strong enough to withstand the total weight of this product and the fixer. (Pay also attention to the finishing at the end of the wire.)
- Mount the fall prevention wire using the black screw at the rear of the camera unit.
- Designated screw for fastening of fall prevention wire (M3 x 6 mm): Screws beyond the specified length must not be used as doing so may damage the interior.

G Monitor Signal Output Terminal Connection

Make use of this terminal for camera angle adjustment during installation or focus adjustment in the Focus Assist mode. Connect it to devices such as a video monitor using a video cable (RCA).

Memo :

- Select the signal system for the monitor output using the [MONITOR OUT] selection switch at the side of this product. ("NTSC" or "PAL")
After adjusting the camera angle, set the switch to "OFF". After changing the switch settings, press the Reset button for less than 2 seconds to reboot the camera.

H Focus Adjustment

If focus assist mode is used, lens iris will be opened to enable high precision focus adjustment.

1 Set the [MONITOR OUT] selection switch to NTSC or PAL

2 Reboot the camera by turning off and on the power or pressing the [RESET] button for less than 2 seconds

3 Press the [RESET] button for 2 seconds or longer, and release within 5 seconds

- Doing so switches to the Focus Assist mode. The [STATUS] indicator alternates lighting up in green color and orange color alternately.
- Iris is opened and edge is enhanced. In case of VN-X35U, central portion of the image is enlarged.

4 Shoot the object

5 Adjust the lens focus

6 Set the [MONITOR OUT] selection switch to OFF

7 Press the [RESET] button for less than 2 seconds to restart

- Focus assist mode is disabled.
- It takes about one minute for the camera to reboot.
- While rebooting, the [STATUS] indicator lights up in orange.

Memo :

- To disable focus assist mode, press [RESET] button between 2 to 5 seconds.
- You can also enable the Focus Assist mode on the viewer. (☞ [INSTRUCTIONS (Setting)])

Continued



Attention:

This symbol is only valid in the European Union.

Information for Users on Disposal of Old Equipment

[European Union]

This symbol indicates that the electrical and electronic equipment should not be disposed as general household waste at its end-of-life. Instead, the product should be handed over to the applicable collection point for the recycling of electrical and electronic equipment for proper treatment, recovery and recycling in accordance with your national legislation.

By disposing of this product correctly, you will help to conserve natural resources and will help prevent potential negative effects on the environment and human health which could otherwise be caused by inappropriate waste handling of this product. For more information about collection point and recycling of this product, please contact your local municipal office, your household waste disposal service or the shop where you purchased the product.

Penalties may be applicable for incorrect disposal of this waste, in accordance with national legislation.

(Business users)

If you wish to dispose of this product, please visit our web page www.jvc-europe.com to obtain information about the take-back of the product.

[Other Countries outside the European Union]

If you wish to dispose of this product, please do so in accordance with applicable national legislation or other rules in your country for the treatment of old electrical and electronic equipment.

Setting

IP Address Settings

This section is a description based on Windows XP.

IP address setting procedure

Follow the procedure below to configure the IP address of the camera.

Step1 IP address setting at the computer

Set the IP address of the computer that is used for configuring the camera settings.

Step2 Internet Explorer settings

Configure the Internet Explorer settings in order to establish connection between the computer and the camera.

Step3 Connecting the camera to the computer

Connect the computer to the camera.

Step4 IP address setting for the camera

Set the [IP Setting] item on the [Basic Settings1] screen to "DHCP Disable" or "DHCP Enable".

Step1 IP address setting at the computer

Camera at factory default is set to "DHCP Disable" (DHCP client function is Off), it will activate under the following IP address after startup. Set the computer to an IP address that enables communication with the following. (For example, set the IP address to 192.168.0.100 and subnet mask to 255.255.255.0.)
IP address : 192.168.0.2
Subnet mask : 255.255.255.0
Default gateway : None

■ IP address setting at the computer

Set the computer to an IP address that enables communication with the camera.

1 Click [Start]

- Select in the sequence of [Control Panel]–[Network Connection]–[Local Area].

Windows Vista:

- Select in the sequence of [Settings]–[Control Panel]–[Network and Sharing Center]–[Manage network connections].

2 The computer on which Internet Explorer is launched automatically selects the connected network

- Right-click and select [Properties].
- Check to ensure that the [Client for Microsoft Networks] and [Internet Protocol(TCP/IP)] check boxes are selected.

Windows Vista:

- Check to ensure that the [Microsoft Network Client] and [Internet Protocol Version 4(TCP/IPv4)] check boxes are selected.

3 Select [Internet Protocol(TCP/IP)] and click [Properties]

Windows Vista:

- Select [Internet Protocol Version 4(TCP/IPv4)] and click [Properties]

4 Set the IP address

- 1 Select [Use the following IP address].
- 2 Specify the [IP address]. (For example, use 192.168.0.100 when the camera is in its default settings.)

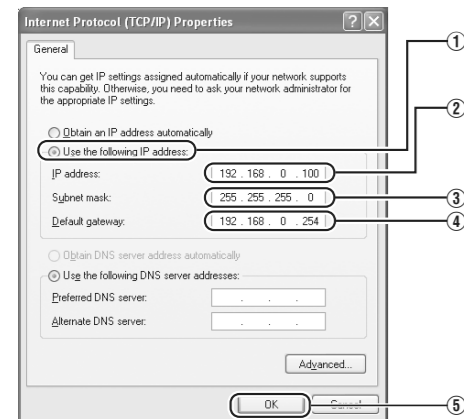
Memo :

- Make sure that you take note of the original IP address before altering.
- Ensure that a duplicate IP address is not specified within the same network environment.

- 3 Set [Subnet mask] to a value that is appropriate for the setting operation. Consult the network administrator if you have any queries. (Use 255.255.255.0 when the camera is in its default settings.)

- 4 When a [Default gateway] is present, make use of the corresponding IP address (e.g., 192.168.0.254).

- 5 Click [OK].



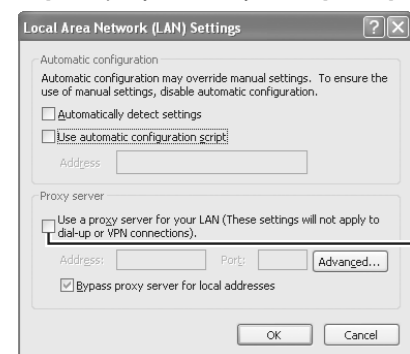
5 Click [OK] on the [Local Area Connection Properties] screen

Step2 Internet Explorer settings

1 Launch the Internet Explorer on the computer

2 If proxy settings are enabled in the Internet Explorer, follow the steps below to disable the proxy of the Internet Explorer

- Select in the order of [Tool]–[Internet Options]–[Connections]–[LAN Setting], followed by deselecting the check for [Use a proxy server for your LAN] under [Proxy Server] of the [Local Area Network (LAN) Settings] window.

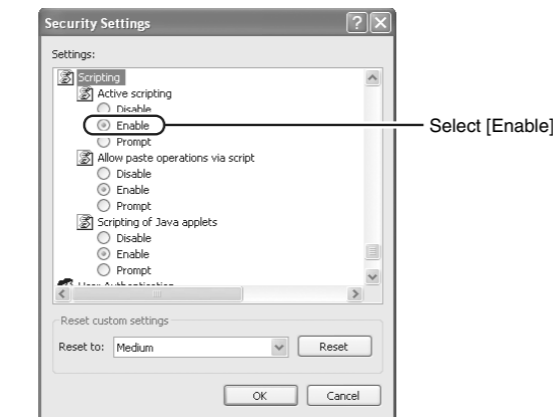


3 If the active script of the Internet Explorer is disabled, follow the steps below to enable it

- Select [Trusted sites] under [Tool]–[Internet Options]–[Security]. Upon doing so, the [Sites...] button directly below becomes active. Click this button, deselect the check in the displayed window, and add the following web site to the zone.

<http://192.168.0.2> (When the camera is in its default settings)

- Next, select [Trusted sites] under [Tool]–[Internet Options]–[Security], and press the [Custom Level] button. Select [Enable] under [Scripting]–[Active script] of the [Security Settings] window that is opened.



4 If ActiveX controls and plug-ins of the Internet Explorer is disabled, follow the steps below to enable it

- Click [Trusted sites] under [Tool]–[Internet Options]–[Security]. Select the [Custom Level] button to open the [Security Settings] window. Set all items under [ActiveX controls and plug-ins] in the opened window to [Enable]. Enable also [Allow Script-initiated window without size or position constraints] under [Miscellaneous].



5 Disable pop-up block

Connection of the camera cannot be established when pop-up block in the Internet Explorer is set to "Enable". Follow the steps below to set the pop-up block to "Disable".

- Selecting [Tool]–[Pop-up Blocker]–[Turn Off Pop-up Blocker] permits all sites.
- To allow only specific sites such as this unit, select [Tool]–[Pop-up Blocker]–[Turn Off Pop-up Blocker], followed by selecting [Tool]–[Pop-up Blocker]–[Pop-up Blocker Settings], which becomes active to open the [Pop-up Blocker Settings] window.

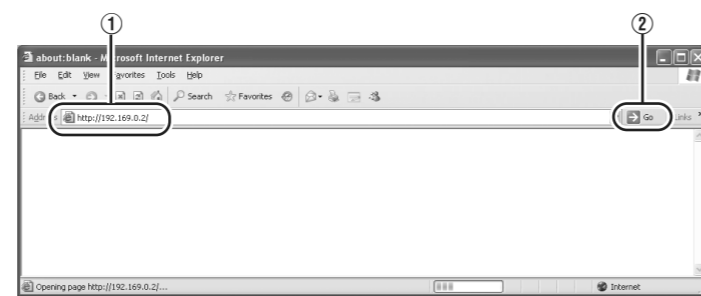
In the opened window, add the address of the camera as a permitted web site address.

6 When plug-in tools such as the Yahoo or Google toolbar are included in the Internet Explorer, disable the pop-up block function of these plug-in tools as well

Step3 Connecting the camera to the computer

1 Launch the Internet Explorer

- 1 Enter the IP address of the camera. (<http://192.168.0.2>, for example)
- 2 Click [Go].



Memo :

- If the proxy server settings for access to the Internet via the Internet Explorer is enabled, you may not be able to specify the IP address directly. In this case, change the proxy settings of the Internet Explorer.

- To open the [Basic Settings1] page without going through the built-in viewer, enter the URL of the [Basic Settings1] page in the address field of the Internet Explorer.

Example :

- VN-V25U : <http://192.168.0.2/cgi-bin/v25display.cgi?v25basicmenu1.html>

- VN-V26U : <http://192.168.0.2/cgi-bin/v26display.cgi?v26basicmenu1.html>

- VN-X35U : <http://192.168.0.2/cgi-bin/x35display.cgi?v35basicmenu1.html>

- After the [Security Settings] screen appears, press the [OK] button to proceed.

■ If the IP address is unknown

IP address settings cannot be changed by accessing via a computer when the IP address of the camera is unknown.

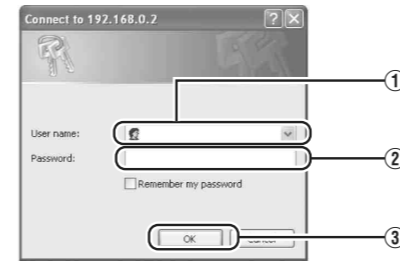
You can use the following method to identify the IP address.

- Search using the "Search tool" inside the "TOOL_E" folder of the supplied CD-ROM.

- * For details on "Search tool", please refer to the "README" file in the CD-ROM supplied with this product.

2 Enter the user name and password (login as administrator)

- 1 Enter the user name. This is set to "admin" by default.
- 2 Enter the password. This is set to "jvc" by default.
- 3 Click [OK].



Memo :

- After the [Security Settings] screen appears, press the [Yes] button to proceed.

3 Built-in Viewer and the operator password entry screen appear

- 1 Enter the Operator Password. (default password is "jvc")
- 2 Click [OK].



Step4 IP address setting for the camera

1 Click [Details] of the Built-in Viewer



2 The [Basic Settings1] screen appears

- 1 Specify the [IP Setting].

■When selecting "DHCP Disable":

Select "DHCP Disable" from [IP Setting] item of the camera, and specify a value in the [IP address], [Subnet Mask] and [Default Gateway] fields.

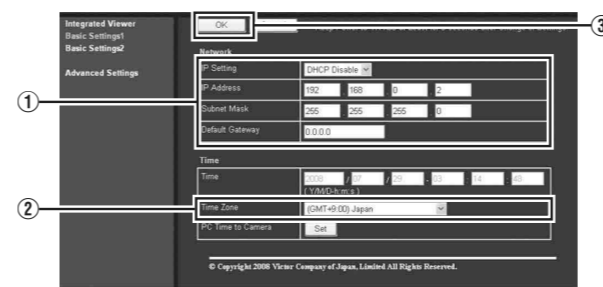
■When selecting "DHCP Enable":

The default setting is "DHCP Disable" (DHCP client function is off).

To assign an IP address from the DHCP server, connect the camera to a LAN where the DHCP server exists.

For details on the IP address assigned to the camera, consult your network administrator.

- 2 Specify the [Time Zone].
- 3 Click [OK].



[Basic Settings1] screen

Note:

- Set the DHCP server such that the same IP address is always assigned to the MAC address of the camera by the DHCP server. Connection may fail if the above setting is not performed.

3 A confirmation screen appears

- Click [OK].
- The camera restarts using the new IP address. It takes about one minute for the camera to restart.

Memo :

- Access from this computer may fail when the IP address of the camera is changed. To enable access to this unit from the same computer, alter the IP address of the computer accordingly.

When the display or configuration of the opened screen appears strange, check the computer settings using the following procedures.

- 1 Click [Start]–[Control Panel]–[Display] and open the [Display Properties] window
- 2 Click the [Settings] tab in the [Display Properties] window, followed by the [Advanced] button
- 3 Check that [DPI setting] in the [General] tab has become [Normal size(96DPI)]
- 4 Otherwise, change the setting to [Normal size(96DPI)] and reboot Windows

Setting Using Internet Explorer

Configure the picture quality setting, alarm setting and other settings using the Internet Explorer.
*For details, please refer to [INSTRUCTIONS (Setting)] (pdf) in the supplied CD-ROM.

Operating the Built-in Viewer

With the built-in viewer, you can monitor JPEG and MPEG4 images and audio (VN-V26U/VN-X35U only).
And on VN-X35U, you can perform PTZ operation and configure PTZ related settings.
*For details, please refer to [INSTRUCTIONS (Setting)] (pdf) in the supplied CD-ROM.

Specifications

Supply voltage : AC 24 V 50 Hz/60 Hz or PoE (DC -48 V)
Current consumption : AC 24 V 0.35 A, PoE 115 mA (5.5 W)(VN-V25U/VN-V26U),
PoE 135 mA (6.5 W)(VN-X35U)

Only while Infrared ray cut filter is moving (for VN-V26U)

AC 24 V 0.5 A, PoE 170 mA (8.2 W)

Mass : Approx 480 g (1.06 lbs) (VN-V25U)

: Approx 530 g (1.17 lbs) (VN-V26U)

: Approx 510 g (1.17 lbs) (VN-X35U)

Ambient temperature : -10 °C to 50 °C (operation)

0 °C to 40 °C (recommended)

Ambient humidity : 20 % RH to 85 % RH (without condensation)

Dimension [Unit: mm (inch)] : 66(2-5/8) x 63(2-1/2) x 126 (5)

*Specifications and appearance of this unit are subject to change for further improvements without prior notice.